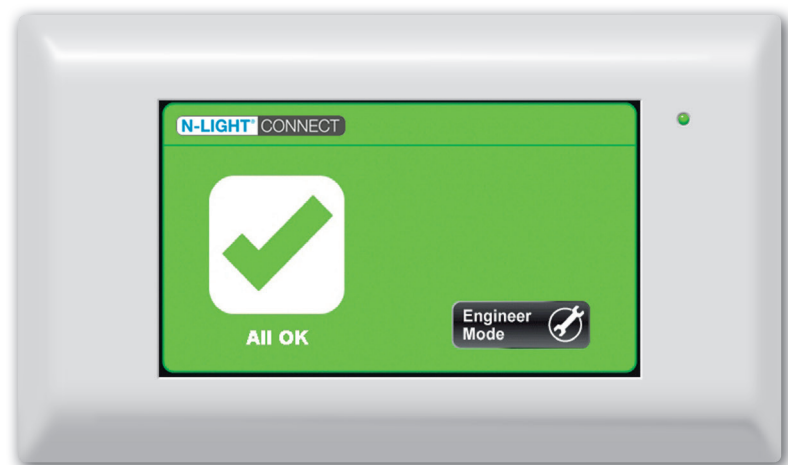


N-LIGHT[®] CONNECT

Live Status Diagnostics,
Automatic Monitoring and
Testing as standard



Powered by:



Ultimate control over your emergency lighting system

The installation of emergency lighting is only the start when assessing if an emergency lighting system is compliant. It is often the case that the end user, whether it's a landlord, occupier or employer, is unaware that it is their responsibility to ensure that the emergency lighting system is checked and maintained in accordance with BS5266-1.

Those that are aware, often resort to hiring a dedicated individual to perform regular checks and document the results, resulting in additional costs and further demands on resources to perform this task.

There is another way ...



An intuitive DALI emergency test and monitoring system is as straightforward as a simple test.

Introducing N-light® CONNECT...



N-LIGHT® CONNECT



Live Status
Diagnostics,
Automatic
Monitoring and
Testing as standard

N-light® CONNECT provides the ultimate control over your emergency lighting system so that monitoring and testing is quick and simple.

N-light® CONNECT features an intuitive GUI (Graphic User Interface) touchscreen that enables live system status diagnostics and report logs for instant information, so that potential problems can be identified and resolved quickly, saving valuable time and resources.

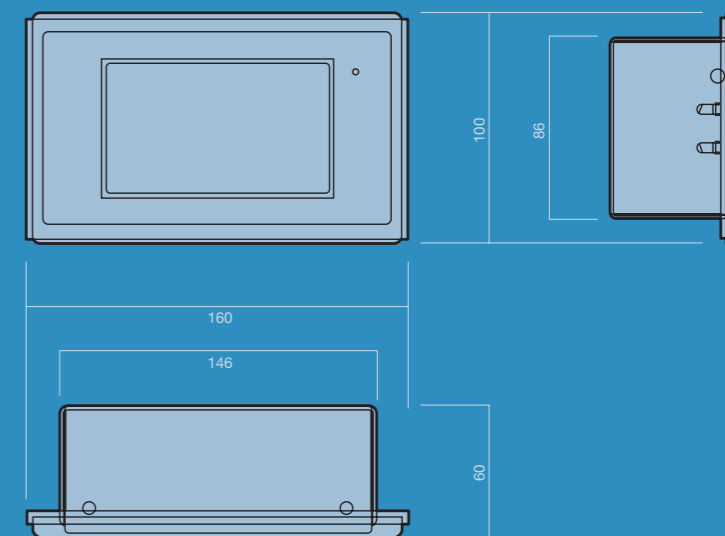
N-light® CONNECT automatically tests and monitors your emergency lighting system. N-light® CONNECT can be tailored to your needs and can monitor up to 128 DALI emergency devices, which can be further customised via N-light® software to create 16 separate DALI groups for straightforward test scheduling and monitoring. This makes it the perfect solution for small or large scale projects, particularly as customisation can be performed at any time, allowing flexibility should your emergency lighting requirements change.



Simple and effective, the way emergency lighting should be.

Key features:

- Touch-screen user interface
- Intuitive colour-coded display of system status
- 128 DALI addresses via two DALI subnets
- Integrated network and power connections
- Integrated long-life CR2032 battery
- Recessed and surface-mount housings supplied
- Ethernet port for commissioning and networking
- Configured using N-light® Configurator software
- Password-protected engineering mode
- View and print reports using N-light® software
- Compatible with all Mackwell DALI emergency products
- Auto power save mode



N-LIGHT® CONNECT

Put your emergency lighting to the test...

N-light® CONNECT can perform the following tests and functions:

- **Function test** – simulates the loss of permanent mains supply and checks that all connected emergency devices operate correctly from the battery supply
- **Duration test** – simulates the loss of permanent mains supply and checks that all connected emergency devices operate correctly from the battery supply for the full rated duration

Both tests can be scheduled or manually started so that testing can take place at a convenient time and not disrupt day to day operations on-site.



N-LIGHT® CONNECT

More about DALI and N-light CONNECT

Digital Addressable Lighting Interface (DALI) is an open communication protocol developed by leading manufacturers within the lighting industry and defined under international standard IEC 62386. DALI was developed to enable lighting to be controlled intelligently and safely, whilst ensuring quality and compliance.

N-light® CONNECT has been designed to work to the DALI and Ethernet open standards and also meets standards EN 61347-2-11, EN 62034, EN 61547 and EN 55015.

N-LIGHT® CONNECT

It's all in the detail...

N-light® CONNECT works in conjunction with N-light® software, which is a detailed configuring, commissioning, reporting and upgrading tool used by accredited engineers and end-users.

N-light® software enables further features to be enabled, such as networking, connections to third party software and email reports.

Networking

N-light® CONNECT touch panels can be networked together to monitor larger DALI systems. Ethernet connections are also possible via a variety of networking options.

Central networking can also be achieved by connecting multiple N-light® CONNECT panels through a network switch. This can be setup by an accredited engineer during installation on-site..

Reporting

All reports documented by N-light® CONNECT can be viewed and downloaded via the N-light® software for detailed analysis. Reports can also be emailed for convenience, meaning access to reports is still achievable, even when you are out of the office and on the go.

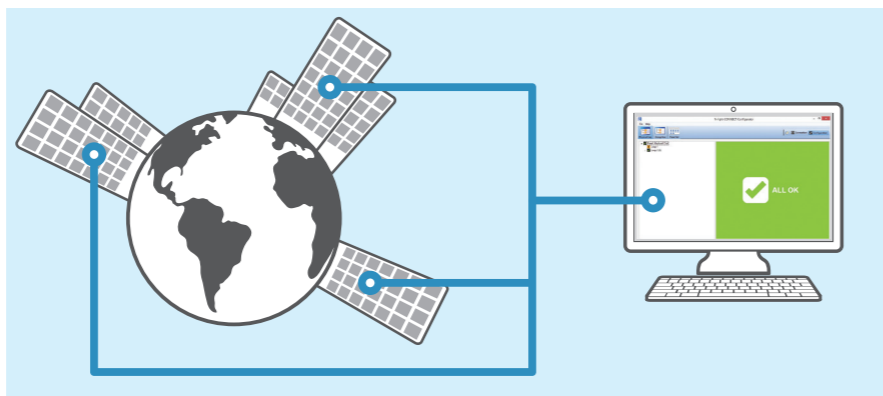
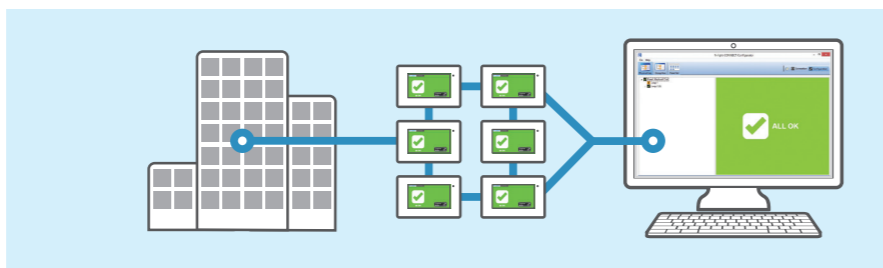
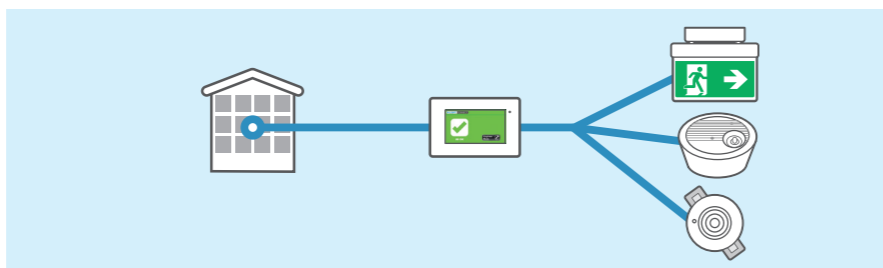


N-LIGHT® CONNECT

How N-light CONNECT can work for you

N-light® CONNECT has been designed to ensure installation and commissioning can be completed simply, quickly and efficiently.

- Contractor friendly products
- Fail safe AutoTest is activated if DALI communications are lost
- Integral Power Supply Unit for the control panel and DALI lines for a simple, clean installation
- Surface mount and recessed installation options
- Unique serial numbers marked on every product (including barcode-readable format)
- Ethernet connection for wireless programming through third party hubs



Small to medium sized installation

One N-Light® CONNECT control panel is suitable for small to medium-sized stand-alone building installations.

Larger site installations

N-Light® CONNECT control panels can be networked together to be used in larger installations.

Multi-site installation

N-Light® CONNECT can be used in multi-site installations with remote access to all the sites

The full portfolio

N-light® CONNECT is designed to work with a large range of Mackwell emergency lighting products, making it the ideal system for most applications.

XYLUX LR range

The XYLUX LR range is a discrete emergency LED luminaire portfolio. Each luminaire comes with tailored optics, which deliver superb light output specific to application requirements. Each lamphead offers superb performance from high efficacy LEDs using Mackwell's signature articulated design.

XYLUX LD range

The XYLUX LD range consists of self-contained LED emergency luminaires, supplied with tailored optics, 3.6V 1.7Ah NiMH battery pack and a deep discharge protection circuit. The XYLUX LD range offers an efficient alternative to the 8W fluorescent bulkhead.

XYLUX LS

XYLUX LS is a simple approach to surface mount emergency lighting that represents flexibility and bespoke appeal for your customers. XYLUX LS can be tailored to the exact requirements of the project, thanks to an intelligent selection of technology bases and fascias that can be combined to create a product that is customer driven and designed with the application in mind.

XYVEX

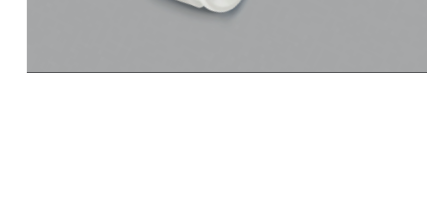
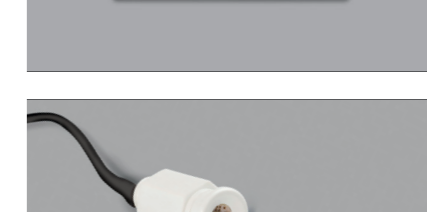
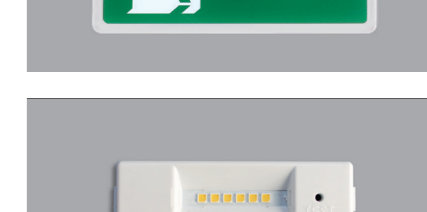
The XY-VEX range of LED emergency exit signs combine Mackwell technology with aesthetic design. XY-VEX is an architectural, high quality LED operated emergency exit sign that can be used in maintained or non-maintained mode.

ICE

ICE is a unique solution from Mackwell that offers OEMs the ability to adapt their LED luminaires for operation in an emergency. ICE is suitable for multiple luminaire applications, from bulkhead amenity lighting to recessed lighting and can be used in new light fittings or retrofitted into existing gear trays.

XY-Fi

XY-Fi is the world's smallest emergency LED conversion system, with a design that makes it easy to install without interfering with the original OEM luminaire design. XY-Fi enables unobtrusive, seamless integration into a wide range of luminaires and, despite its compact size of only Ø12mm, the unit still delivers a powerful light output achieving spacings of up to 6 metres





Mackwell UK

Vigo Place, Aldridge, West Midlands WS9 8UG, England

Tel. +44 (0) 1922 458 255

sales@mackwell.com

www.mackwell.com

Mackwell Hong Kong

Unit 1102-1103, 11F, Wing Tuck Commercial Centre

177-183 Wing Lok Street, Sheung Wan, Hong Kong

Tel. +852 9389 4747

Mackwell Middle East

PO Box : 122195 SAIF Zone, UAE

Tel. +971 6 552 8328