

# N-LIGHT® CONNECT

DALI Emergency Lighting Test and Monitoring System



## N-LIGHT® CONNECT



Simple Monitoring  
and Testing

### Intuitive DALI emergency lighting test and monitoring

The N-light® CONNECT touch panel is a DALI emergency lighting test and monitoring system from Mackwell. N-light® CONNECT is designed to be simple to use and intuitive with live system status diagnostics for instant information. Multiple N-light® CONNECT touch panels can be networked together to monitor larger DALI systems.

The control panel operates without the need for permanent connection to a PC.

Reports may be viewed and printed using N-light® software and remote access is possible through Ethernet connection via a variety of networking options. Suitable for use in conjunction with all Mackwell DALI emergency components, including XYLUX® self-contained LED emergency luminaires and XY-VEX exit signs.

#### Key features:

- Touch-screen user interface
- Intuitive colour-coded display of system status
- 128 DALI addresses via two DALI subnets
- Integrated network and power connections
- Integrated long-life CR2032 battery
- Recessed and surface-mount housings supplied
- Ethernet port for commissioning and networking
- Configured using N-light® Configurator software
- Password-protected engineering mode
- View and print reports using N-light® software
- Compatible with all Mackwell DALI emergency products
- Auto power save mode



Vigo Place, Aldridge, West Midlands WS9 8UG England  
+44 (0) 1922 458 255  
sales@mackwell.com www.mackwell.com

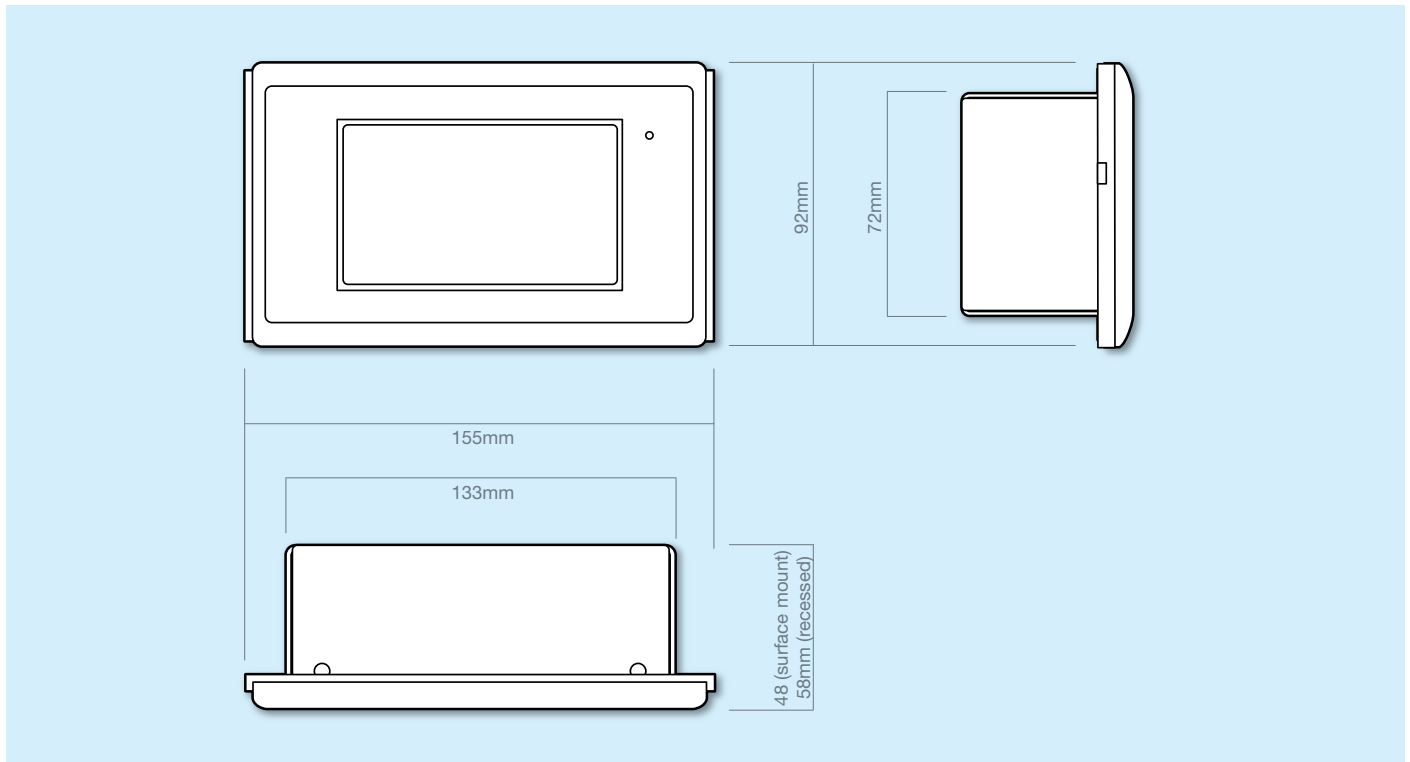




# N-LIGHT<sup>®</sup> CONNECT

DALI Emergency Lighting Test and Monitoring System

## Dimensions



### Specification

Rated voltage	:	230V
Supply frequency	:	50/60Hz
Power	:	4.1W
Screen	:	4.3" resistive touch-panel 24-bit, 16 million colour LCD
Resolution	:	480 x 272 pixels
Backlight	:	LED
Data transfer	:	Ethernet TCP/IP
Memory	:	4-year test log
Internal battery	:	CR2032 lithium coin cell (replaceable)
Temperature range:	:	0°C to +50°C
Weight	:	310g

### Outputs

2 x DALI loops	:	Maximum of 64 devices per loop
Current	:	250mA

### Standards

EN 61347-2-11
EN 62034
EN 61547
EN 55015

### Installation Options

- Surface mounted
- Recessed

### N-light<sup>®</sup> CONNECT Kit Contents

1. Pattress box (surface and recessed)
2. Control panel
3. Clip-on fascia
4. USB to mini-USB cable
5. 2 x 25mm M3.5 electrical screws
6. 2 x 2-way DALI connector blocks
7. 1 x 4-way power connector block

### Technology

#### DALI AutoTest<sup>®</sup>

Provides recognised benefits by enabling testing and monitoring of an emergency lighting system either on-site or via an internet connection. DALI AutoTest<sup>®</sup> is ideal for monitoring larger buildings and multiple sites.

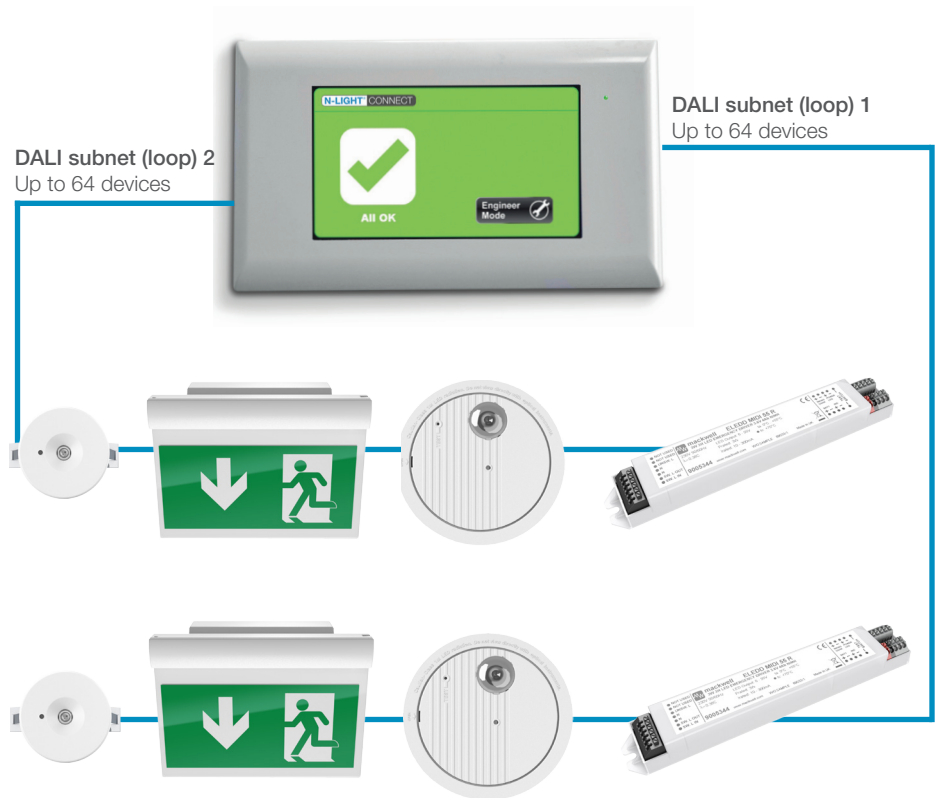
#### Please note:

**N-Light<sup>®</sup> CONNECT** must be used in conjunction with N-light<sup>®</sup> software for monitoring and reporting purposes.

**N-Light<sup>®</sup> CONNECT** is compatible with Mackwell DALI emergency control gears and emergency luminaires.

# N-LIGHT® CONNECT

## DALI Emergency Lighting Test and Monitoring System



N-light CONNECT can be tailored to your needs and can monitor up to 128 DALI emergency devices via two loops. The system can be further customised to the users requirements via N-light® software to create 16 separate DALI groups to make test scheduling and monitoring simple. DALI groups can also be edited at any time, allowing flexibility should your emergency lighting requirements change. N-light® CONNECT is the perfect solution for small or large scale projects.

N-light® CONNECT has been designed to work to the DALI and Ethernet open standards to ensure installation and commissioning can be completed simply, quickly and efficiently.

### Order code

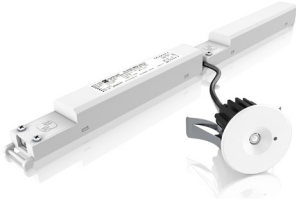
Technology type	Order code	Description
DALI touch-screen panel	9005033	N-Light CONNECT V1.5 Kit



# N-LIGHT<sup>®</sup> CONNECT

## DALI Emergency Lighting Test and Monitoring System

N-Light<sup>®</sup> CONNECT is suitable for use with the following Mackwell products:



**XYLUX LR range** is a discrete emergency LED luminaire portfolio. Each luminaire comes with tailored optics, which deliver superb light output specific to application requirements.



**XY-FI** is the world's smallest emergency solution combining both the LED indicator and emergency LED into one ultra-discreet package.



**XY-VEX** is an architectural LED Emergency Exit sign that comes in a range of installation options including wall mounted, surface mounted, suspended and semi recessed.



**ICE**, Integrated Conversion for Emergency, is the next generation of LED conversion solutions that allows OEM manufacturers to adapt their LED luminaires to emergency.



**XYLUX LD range** are self-contained luminaires that have tailored optics to cater for a range of applications. The XYLUX LD range is an efficient alternative to the traditional 8W bulkhead.



**LS range** are high performance self-contained LED emergency luminaires suitable for high-bay, mid-bay, open-area and escape route applications.



**ELEDD MIDI** articulated drivers offer constant current, SELV compliant outputs, suitable for multiple power LED's with forward voltages of 6V to 200V.



Vigo Place, Aldridge, West Midlands WS9 8UG England  
+44 (0) 1922 458 255  
sales@mackwell.com www.mackwell.com

### WARRANTY

This product is guaranteed for three years and covers faulty workmanship and materials. This "Return to Base" warranty requires that the product is used within the terms and conditions stated above, in our literature and on our website. Products returned to us under warranty must be carriage paid. Mackwell Electronics Ltd. accept no liability for cost incurred.

Mackwell maintains a policy of continuous development and reserves the right to change the details shown on this data sheet without prior notice.

The contents are intended for guidance only.

Company Reg No: 1414873. VAT Reg No GB330230618

### Mackwell UK

Vigo Place, Aldridge, West Midlands WS9 8UG. England - Tel. +44 (0) 1922 458 255

### Mackwell Hong Kong

Unit 1102-1103, 11F, Wing Tuck Commercial Centre, 177-183 Wing Lok Street, Sheung Wan, Hong Kong - Tel. +852 9389 4747

### Mackwell Middle East

PO Box : 122195 SAIF Zone, UAE - Tel. +971 6 552 8328